



AssureCalc: Accessing the in-tool User Guide

Software version 2.3

Mar 16, 2009

Contents

- 1. AssureCalc Help 1

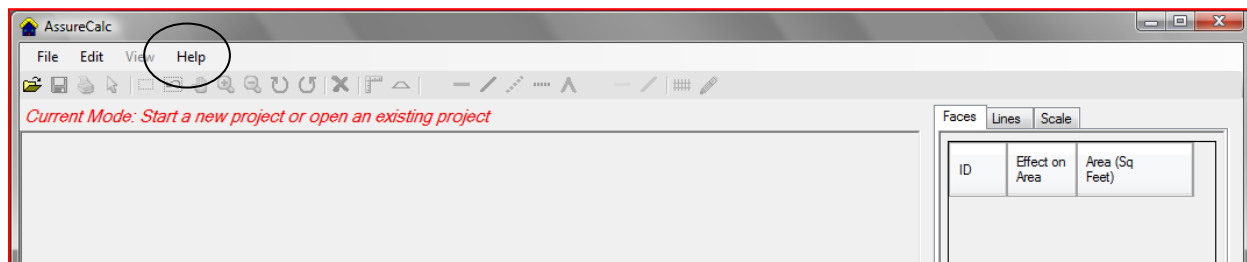
Instructions for users on how to access AssureCalc user guide. The user guide is an interactive guide designed to assist users answer common use questions and be available from within the tool. The AssureCalc software is designed to help adjusters work faster, safer and more accurately when measuring roofs and allows for the adjuster to focus on damage assessment and not on hand drawing complex roof diagrams.

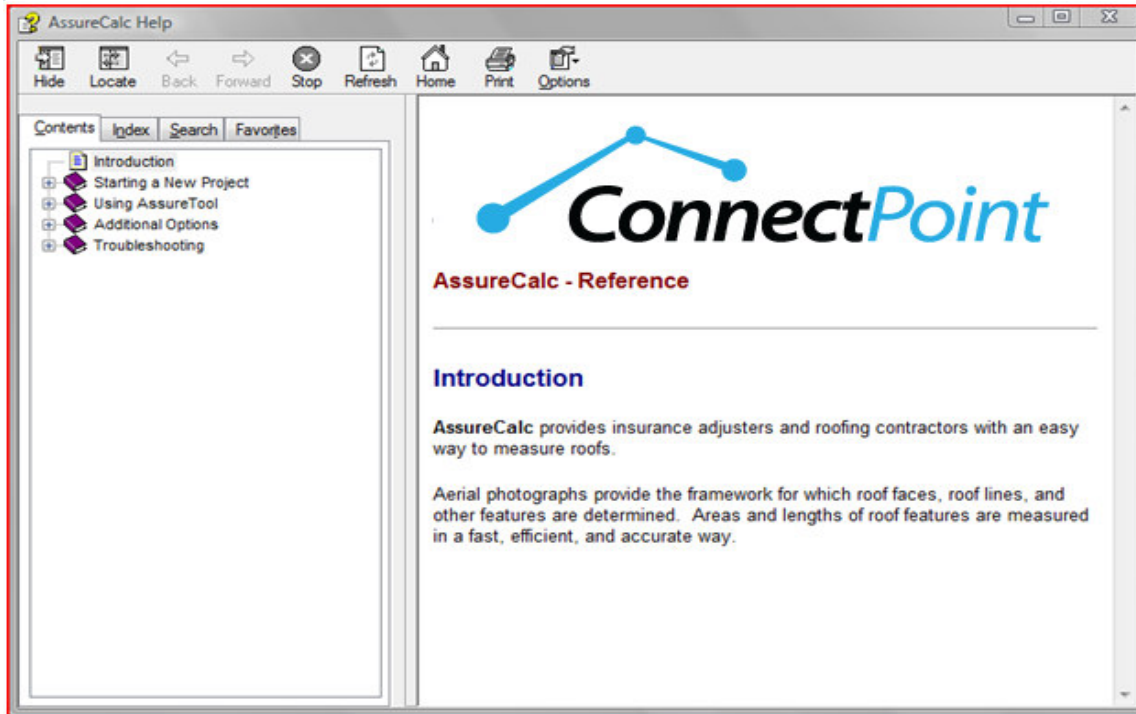
Go to -> <http://assurecalc.com/>

Follow the instructions on creating an account and downloading, installing and licensing the AssureCalc software. The Assure Quick use guide can assist you with these steps if required. Open AssureCalc and

1. AssureCalc Help

From within the AssureCalc program, and at any time during use please note the **Help** top level menu option.





The in tool help system is composed of a user manual broken into sections

- Starting a new project
- Using AssureCalc
- Additional Options
- Troubleshooting

The User Manual also contains an Index and Search function and a Favorites area – a section allowing bookmarks to frequently used areas of the manual.

The manual is provided to offer comprehensive access to information on how to use the tool and to explain common use cases.

Additional assistance is available, if you do not find what you are looking for.

Email: Support@assurerisk.com

Toll free number 877-330-2111

The ConnectPoint Team
5310 Harvest Hill Road, Suite 200, Dallas, TX 75230